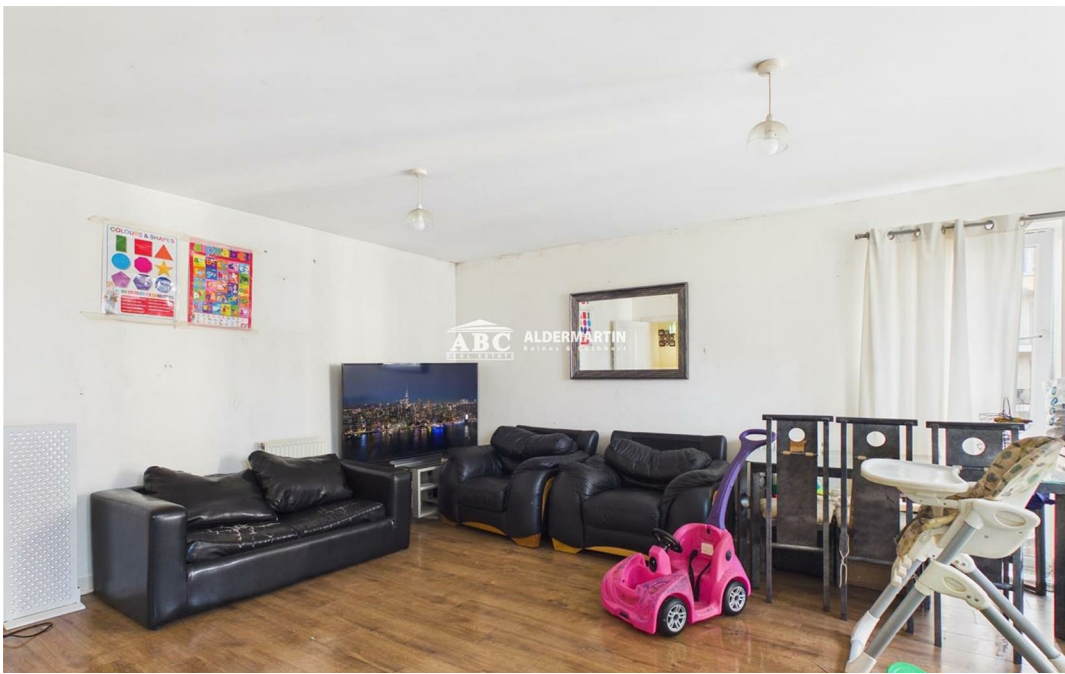
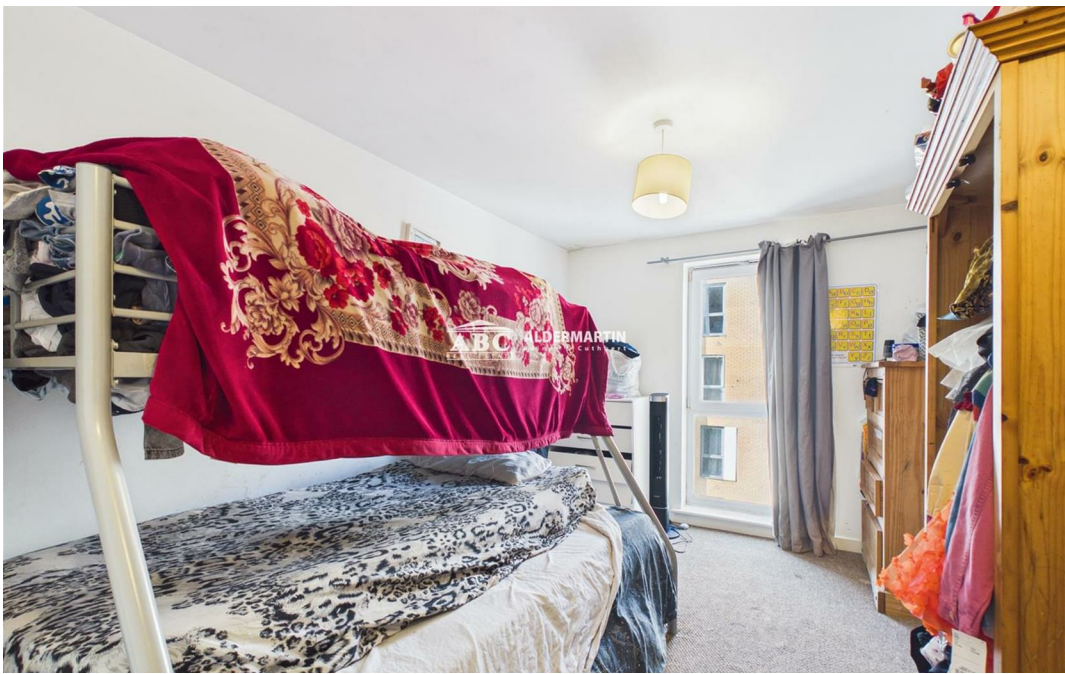




**JUPITER COURT, CAMERON CRESCENT,  
EDGWARE HA8 0FN**

**£274,950  
Leasehold**

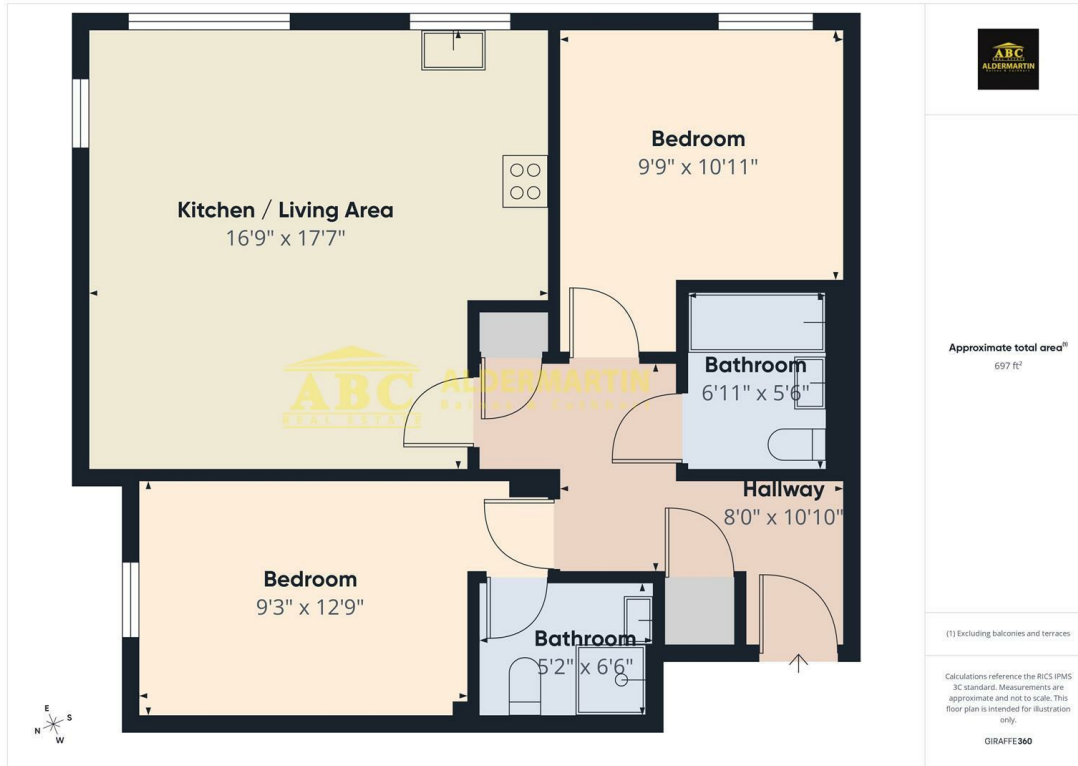




- 2 BEDROOM FLAT
- EPC RATING B - TAX BAND D
- COMMUNAL GARDENS

- 2 BATHROOMS
- LIFT TO SECOND FLOOR
- CLOSE TO SHOPS & TRANSPORT

- ALLOCATED PARKING SPACE.
- 106 YEAR LEASE
- SERVICE CHARGES £2,705 PER YEAR



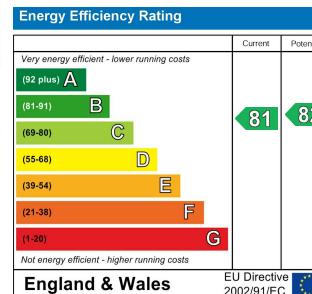
**ABC ALDERMARTIN**

Approximate total area<sup>1)</sup>  
697 ft<sup>2</sup>

(1) Excluding balconies and terraces

Calculations reference the RICS IPMS 3C standard. Measurements are approximate and not to scale. This floor plan is intended for illustration only.

**GIRAFFE 360**



Welcome to this charming flat located on Cameron Crescent in the desirable area of Edgware. This modern property, built in 2010, offers a comfortable living space of 764 square feet, making it an ideal choice for individuals or small families seeking a contemporary home. Upon entering, you will find a well-appointed reception room that provides a warm and inviting atmosphere, perfect for relaxation or entertaining guests. The flat boasts two spacious bedrooms, each designed to offer a peaceful retreat at the end of the day. With two bathrooms, including an en-suite, convenience and privacy are assured for all residents. The property benefits from allocated parking, a valuable feature in this bustling area, ensuring that you always have a secure place for your vehicle. Additionally, the presence of a lift in the block enhances accessibility, making it suitable for all ages. Cameron Crescent is situated in a vibrant community, with local amenities, shops, and transport links within easy reach. This flat presents an excellent opportunity for those looking to enjoy modern living in a well-connected location. Do not miss the chance to make this delightful property your new home.

**ABC Hendon Sales**  
**020 8621 4000**  
**www.abcestates.co.uk**

